

DIRECT SYSTEM

VENEER
OCCLUSIONVD
COMPOSITE



edelweiss
DENTISTRY

beautiful innovation you can trust

Bio-Esthetics and function in one appointment

edelweiss dentistry is a “think tank” driven by inspiration and technical know-how that conceptualizes and produces innovative systematic solutions that are developed together with partners within the dental industry and marketed via an exclusive dental distribution network. The edelweiss VENEER and OCCLUSIONVD system are state of the art for modern and minimally invasive esthetic dentistry.

For the first time in the history of dentistry, it is now possible to work with prefabricated veneers made from Nano-Hybrid Composite using modern laser technology. Never before has it been feasible to directly create the natural shape and youthful luminance of a tooth, so easily and perfectly in a single appointment. Its versatile application together with its time and cost saving procedure makes the edelweiss VENEER and OCCLUSIONVD SYSTEM a sound investment in the future with the best interest of the patient in mind. Convince yourself.

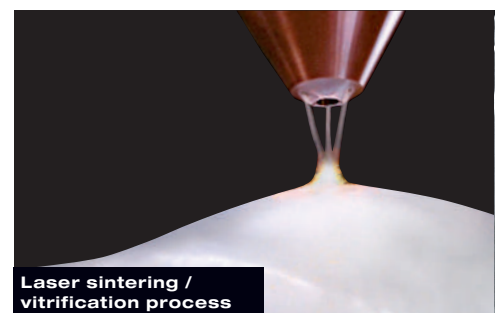


Stephan Lampi

CEO, Founder & Inventor
of edelweiss dentistry

Claudio Novelli

Clinical and
Scientific Director



Laser sintering /
vitrification process

The Progressive Technical Concept

DIRECT SYSTEM

VENEER OCCLUSIONVD COMPOSITE

VENEER

CERVICAL AREA:
0.2 mm

FACIAL AREA:
0.6 mm

INCISAL EDGE:
1.0 - 1.3 mm



OCCLUSIONVD

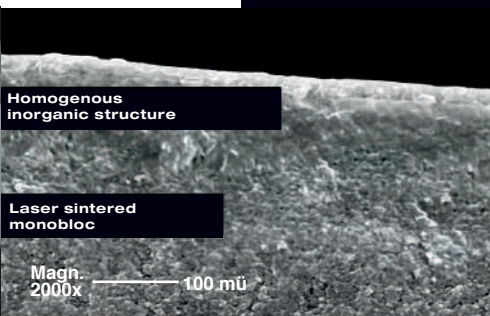
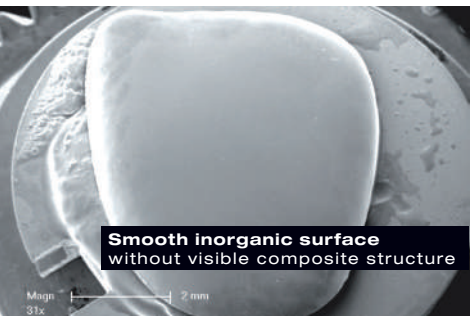
MARGINAL AREA:
0.2 mm

OCCLUSION AREA:
0.6 - 1.3 mm

edelweiss VENEER & OCCLUSIONVD

The laser-treated process combines the best of two worlds. The section below shows a distinct layer of vitrified glass fused together with a laser sintered monobloc of barium glass. The surface is homogenous without visible composite resin structure.

This results in an anorganic biomechanical restoration in function and esthetics. The difference lies in its similarity with nature.



Technical Data	COMPOSITE
Flexural Strength	200 MPa
Compressive Strength	550 MPa
Flexural Modulus	20 GPa
Surface Hardness	95 HV

(Source: internal data: R&D and QM department edelweiss dentistry)



The Composition



Step by Step VENEER



- 1** Non-prep preoperative situation with retraction cord
- 2** Etching with 37 Phosphoric acid
- 3** Applying adhesive to tooth surface

- 4** Adjusted & filled VENEER
- 5** Application of VENEER onto tooth
- 6** Position & press the VENEER into place, remove excess composite

- 7** Tack curing near the incisal edge with light curing unit
- 8** Cemented VENEER
- 9** Finishing of incisal edges

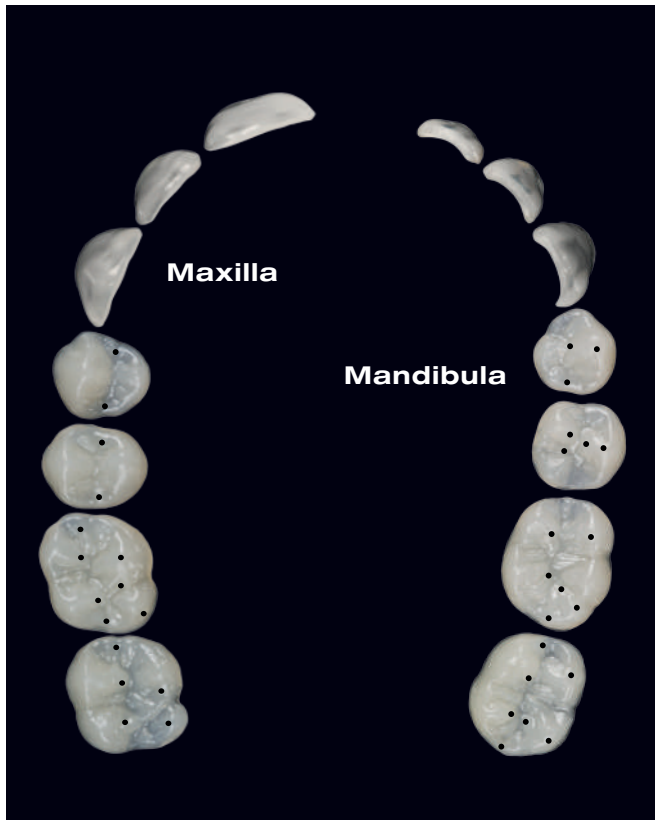
INDICATIONS

- Anterior and posterior restorations
- Tooth discolorations
- Anatomical deformities
- Diastema
- Erosion & Attrition
- Customized Veneers, Crowns & Bridges
- Crowns & Crown facings
- Increasing the vertical dimension (CMD)

ADVANTAGES

- One appointment
- Minimally invasive
- Natural look
- Long-lasting
- Biomechanical
- Biocompatible
- Antibacterial
- Economical

Sizes & Shades



Claudio Novelli
P.H.D. D.M.D.
Clinical & Scientific Director

The best for your patients

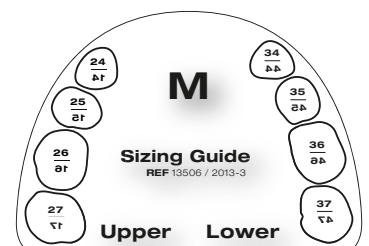
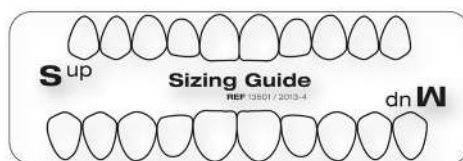
«By combining and adapting of the latest composite and laser technology, edelweiss dentistry has made a quantum leap into the future of minimally invasive dentistry. The laser process combines the best of two worlds: an homogeneous, inorganic and maximum gloss surface with a thermally tempered and dynamic composite core. Thus, an optimal integration in function and esthetics is achieved. This, combined with maximum cost-effectiveness, has convinced me and my patients.»

«The difference lies in the high similarity with nature»

Always the right size

The edelweiss VENEERS and OCCLUSIONVDs are provided in different sizes. Using the edelweiss Sizing Guides, it is possible to easily determine the appropriate size of enamel shells.

VENEER Sizes: XS, S, M, L
OCCLUSIONVD Sizes: S, M, L



Shading

edelweiss VENEERS and OCCLUSIONVD consist of the shade Enamel - Vita Enamel AO. The respective dentin and enamel shades used to cement the edelweiss VENEER and OCCLUSIONVD will determine the final shade tone of the restoration.

Example: edelweiss VENEER (Vita Enamel Shade AO) cemented with Dentin Shade A3 (Vita Dentin Shade A3) will result in the Vita Dentin Shade A3.



ENAMEL

Shade of edelweiss
VENEER & OCCLUSIONVD



Tailored to your workflow

Direct or from the laboratory

The system from edelweiss dentistry offers the dentist three different treatment solutions which is tailored to the clinicians workflow.

Be your own creator and fit the VENEERS & OCCLUSIONVDs individually and directly on the patient. Tooth restorations in just one session can be realized simply and perfectly with the pre-shaped enamel shells. Or rely on our experience and get the VENEERS & OCCLUSIONVDs customized by our dental technicians.



Start Today

Simply download our customization service lab sheet from the edelweiss website (www.edelweiss-dentistry.com/downloads). Fill out the form, attach it to your study model or impression and send it to our edelweiss laboratory. Perfect fitting was never that easy.

Customization service lab sheet

Model instruction	Information
<ul style="list-style-type: none">Current shade (Vita)Shade required (Vita)Teeth to be restored: Please mark below*Impression (silicon, visible vestibular) or Study model (without visible hard stone) <input type="checkbox"/> enclosed*Therapeutic Michigan Sprint desired? Cost € 230,-*When Study model is not included, cost from the laboratory € 10,20	<ul style="list-style-type: none">Number of dentures in storageMaterial: E-namel, No. and signDate sent:Date work requiredExpenses delivery? Yes / NoApproved marked running on the model <input type="checkbox"/> YesSend pictures of face profile and clinical situation to: edelweiss@edelweiss-dentistry.comShipping (Express € 12,- / Standard € 6,50 - € 21,- depending on country, cost of the package and priority)
Cost of customization: for 1 Veneer* € 50,- for 1 occlusionVD* € 95,- for 1 occlusionVD* € 65,- for 1 occlusionVD* € 150,-	Information for customers from outside EU: Please note that we only ship "express" to your region. Please bear in mind that all indicated prices are net (without tax) as well as evidence of costs for express VENEERS respectively OCCLUSIONVDs and do not include costs of transport. Errors and printing errors are waived.
<p>up 10 14 13 12 11 21 22 23 24 25 down 45 44 43 42 41 31 32 33 34 35</p> <p>up 17 16 15 14 13 12 11 21 22 23 24 25 down 47 46 45 44 43 42 41 31 32 33 34 35</p>	<p>Address / Stamp:</p>
<p>* Price does not include VENEER or OCCLUSIONVD. Prices with 20% VAT.</p> <p>* Special instructions - Delivery glazer</p>	<p>edelweiss dentistry products gmbh - Austria edelweissdentistry.com www.edelweiss-dentistry.com</p>



DIRECT

Adjust the VENEERS & OCCLUSIONVDs directly on the patient and then cement them using adhesive technique as well as the highly filled edelweiss nano-hybrid composite. The system allows restorations within just one session. This saves time and money for you and your patient.



SEMI-DIRECT

You always have the possibility to adapt the VENEERS semi-directly by first grinding the VENEERS & OCCLUSIONVDs into shape, followed by bonding and then positioning with composite onto the unbonded tooth, removing surplus material and light curing. This allows you to prepare a perfect fit of all VENEERS before the final bonding and cementing.



INDIRECT

You have no time to adjust the enamel shells directly or your case is quite complex? No problem. Just send us the patients case related impression or study model together with the completed order form and get the VENEERS & OCCLUSIONVDs or even crowns and bridges customized by our dental technicians.



MALALIGNED TEETH / OLD RESTORATIONS

edelweiss VENEER



edelweiss VENEER

13, 12, 11 & 21, 22, 23



DISCOLORATION

edelweiss VENEER



edelweiss VENEER

14, 13, 12, 11 & 21, 22, 23, 24



DIASTEMA

edelweiss VENEER



edelweiss VENEER

13, 12, 11 & 21, 22, 23



ANATOMICAL DEFORMITIES / LENGTHENING OF THE INCISAL EDGE

edelweiss VENEER



edelweiss VENEER

12 & 22

edelweiss N.H.-COMPOSITE

11 & 21, 13 & 23



CROWN FACINGS / ABRASION

edelweiss VENEER



edelweiss VENEER

14, 13, 12, 11 & 21, 22, 23, 24



1 Isolation with Opal Dam and etching with Ceramic Etch

2 Etching with 37 % Phosphoric Acid

3 Applying Bond

4 Tack curing near the incisal edge with light curing unit

5 Covering metal area with edelweiss Opaque White

6 Application of VENEER

7 Position & press the VENEER into place

FULL MOUTH REHABILITATION

edelweiss VENEER & OCCLUSIONVD



SINGLE RESTAURATIONS WITH OCCLUSIONVVD

edelweiss **OCCLUSIONVVD**

Direct ceramic crown facing



Direct replacement of large amalgam



Direct post endodontic tooth onlay



Expertise & Knowledge

Live-Workshops for your success

Experience the edelweiss system live on one of our Workshops with lectures and hands-on demonstrations! Get in touch with your sales representative or go to www.edelweiss-dentistry.com/events



Get your edelweiss compendium and other advertising materials as a PDF download and show your patients the versatile options provided by the edelweiss system.



Online education on our edelweiss website



Visit our edelweiss video library!

Explore our step by step videos and quick tips on the edelweiss website and learn how to optimally treat your patients within a short time.

www.edelweiss-dentistry.com/videos



Marc Bachmann
Webinar DT Study Club
Bio-Esthetic & Function
in one appointment

Sanette Muller &
Stephan Lampl
Full Mouth Rehabilitation
Amelogenesis
Imperfecta

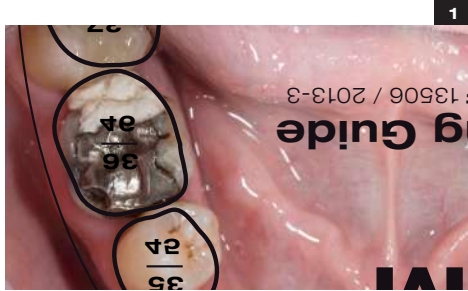
Stephan Lampl &
Claudio Novelli
Full Mouth Rehabilitation
with edelweiss VENEERS
& OCCLUSIONVDs

Stephan Lampl &
Claudio Novelli
Full Mouth Rehabilitation
My story /
Robert Lucero

Didier Dietschi
Implementation &
Characterization of
edelweiss VENEERS

... and many more step-by-step documentations and presentations on our website!

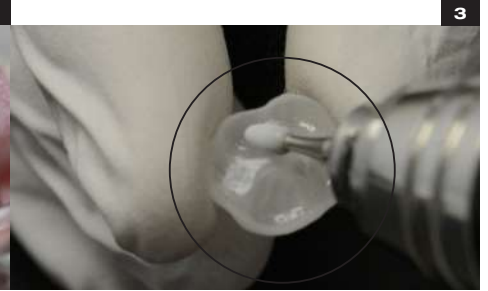
Step by Step OCCLUSIONVD



Preoperative situation. Occlusal view.



Prepared and roughened crown.



Roughen inner surface of the OCCLUSIONVD.



Insertion of the OCCLUSIONVD.



Positioning and fit check of established position in occlusion.



Positioning and fit check of established position in occlusion.



Removal of the semi direct fitted OCCLUSIONVD.



Basic view of the semi direct fitted OCCLUSIONVD.



Isolation with Wedge Guards and etching for 30 sec.



Insertion and final positioning of OCCLUSIONVD.



Final fit check.



Adapt margins. Removal of surplus material.



Finishing interproximal areas using polishing strip.



Visual observation.



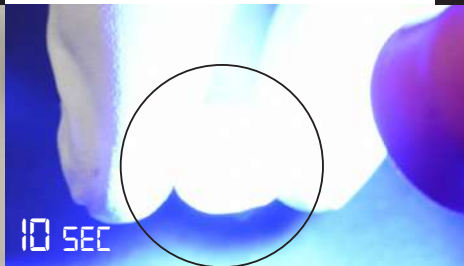
Reocclusion.

4



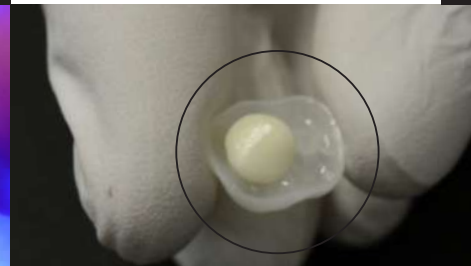
Application of VENEER Bond onto OCCLUSIONVD.

5



Light cure for 10 sec. with power light at standard power. With other light cure for 20 sec.

6



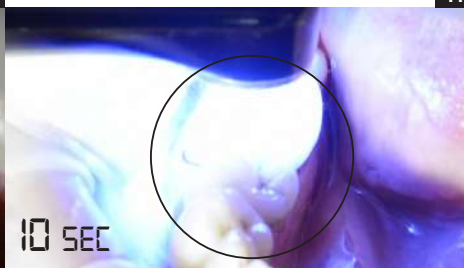
OCCLUSIONVD ready for semi direct placement (filled with dentin).

10



Visual observation.

11



Light cure with power light for 10 sec. With other light cure 20 sec.

12



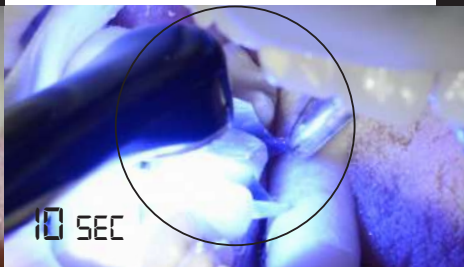
Visual observation.

16



Placing a puddle coat of Bond on crown.

17



With power light cure for 10 sec. at standard power. With other light cure for 20 sec.

18



Adapt Nano Hybrid Composite into OCCLUSIONVD.

22



With power light cure for 10 sec. at standard power. With other light cure for 20 sec.

23



Removal of Wedge Guards.

24



Finish cervical and interproximal margins using Soflex Discs.

28



Reocclusion.

29



For high shine polish OCCLUSIONVD margins with Jiffy polishers.

30



Final postoperative situation.

Toolboxes



ADVANCED DIRECT SYSTEM VENEER & OCCLUSIONVD TOOLBOX REF 13700

36 edelweiss VENEERS

- 1 VENEER SET S up (1 x 14, 13, 12, 11, 21, 22, 23, 24 S)
- 1 VENEER SET M up (1 x 14, 13, 12, 11, 21, 22, 23, 24 M)
- 1 VENEER SET L up (1 x 14, 13, 12, 11, 21, 22, 23, 24 L)
- 1 VENEER SET S low (1 x 43, 42, 41, 31, 32, 33 S)
- 1 VENEER SET M low (1 x 43, 42, 41, 31, 32, 33 M)

48 edelweiss OCCLUSIONVD

- 2 OCCLUSIONVD SET S up (1 x 17, 16, 15, 14 S) (1 x 24, 25, 26, 27 S)
- 2 OCCLUSIONVD SET M up (1 x 17, 16, 15, 14 M) (1 x 24, 25, 26, 27 M)
- 2 OCCLUSIONVD SET L up (1 x 17, 16, 15, 14 L) (1 x 24, 25, 26, 27 L)
- 2 OCCLUSIONVD SET S low (1 x 47, 46, 45, 44 S) (1 x 34, 35, 36, 37 S)
- 2 OCCLUSIONVD SET M low (1 x 47, 46, 45, 44 M) (1 x 34, 35, 36, 37 M)
- 2 OCCLUSIONVD SET L low (1 x 47, 46, 45, 44 L) (1 x 34, 35, 36, 37 L)

25 edelweiss NANO-HYBRID COMPOSITE DENTIN SHADE

- 5 Dentin A0 0.3 g Tip
- 5 Dentin A1 0.3 g Tip
- 5 Dentin A2 0.3 g Tip
- 5 Dentin A3 0.3 g Tip
- 5 Dentin A3.5 0.3 g Tip

5 edelweiss NANO-HYBRID COMPOSITE ENAMEL SHADE

- 5 Enamel 0.3 g Tip

1 edelweiss NANO-HYBRID COMPOSITE FLOW

- 1 Enamel Flowable 1.5 g Syringe

2 edelweiss EFFECT SHADES

- 1 Opaque White 1.5 g Syringe
- 1 Effect Blue 1.5 g Syringe

1 edelweiss BOND

- 1 VENEER Bond 5 ml Bottle

ACCESSORIES

- Dentin & Enamel Shade Guide
- VENEER & OCCLUSIONVD Sizing Guide up & low
- FLOW Application Tips (10x)
- Step by Step Booklet
- Instructions for use



Removable cover for more flexibility



STARTER DIRECT SYSTEM VENEER TOOLBOX
REF 13710

- 20

edelweiss VENEERS
- 1

VENEER SET S up
(1 x 13, 12, 11, 21, 22, 23 S)
- 1

VENEER SET M up
(1 x 14, 13, 12, 11, 21, 22, 23, 24 M)
- 1

VENEER SET L up
(1 x 13, 12, 11, 21, 22, 23 L)
- 25

edelweiss NANO-HYBRID COMPOSITE DENTIN SHADE
- 5

Dentin A0 0.3 g Tip
- 5

Dentin A1 0.3 g Tip
- 5

Dentin A2 0.3 g Tip
- 5

Dentin A3 0.3 g Tip
- 5

Dentin A3.5 0.3 g Tip
- 5

edelweiss NANO-HYBRID COMPOSITE ENAMEL SHADE
- 5

Enamel 0.3 g Tip
- 1

edelweiss NANO-HYBRID COMPOSITE FLOW
- 1

Enamel Flowable 1.5 g Syringe
- 2

edelweiss EFFECT SHADES
- 1

Opaque White 1.5 g Syringe
- 1

Effect Blue 1.5 g Syringe
- 1

edelweiss BOND
- 1

VENEER Bond 5 ml Bottle

ACCESSORIES

Dentin & Enamel Shade Guide
VENEER Sizing Guide up & low
FLOW Application Tips (10x)
Step by Step Booklet
Instructions for use



STARTER DIRECT SYSTEM OCCLUSIONVD TOOLBOX
REF 13720

- 32

edelweiss OCCLUSIONVD
- 2

OCCLUSIONVD SET S up
(1 x 17, 16, 15, 14 S) (24, 25, 26, 27 S)
- 2

OCCLUSIONVD SET M up
(1 x 17, 16, 15, 14 M) (1 x 24, 25, 26, 27 M)
- 2

OCCLUSIONVD SET S low
(1 x 47, 46, 45, 44 S) (1 x 34, 35, 36, 37 S)
- 2

OCCLUSIONVD SET M low
(1 x 47, 46, 45, 44 M) (1 x 34, 35, 36, 37 M)
- 25

edelweiss NANO-HYBRID COMPOSITE DENTIN SHADE
- 5

Dentin A0 0.3 g Tip
- 5

Dentin A1 0.3 g Tip
- 5

Dentin A2 0.3 g Tip
- 5

Dentin A3 0.3 g Tip
- 5

Dentin A3.5 0.3 g Tip
- 5

edelweiss NANO-HYBRID COMPOSITE ENAMEL SHADE
- 5

Enamel 0.3 g Tip
- 1

edelweiss NANO-HYBRID COMPOSITE FLOW
- 1

Enamel Flowable 1.5 g Syringe
- 1

edelweiss BOND
- 1

VENEER Bond 5 ml Bottle

ACCESSORIES

Dentin & Enamel Shade Guide
OCCLUSIONVD Sizing Guide up & low
FLOW Application Tips (10x)
Step by Step Booklet
Instructions for use

Refills

edelweiss VENEER SET REFILLS

REF 13000	edelweiss VENEER SET 14-24 S up (1 x 14, 13, 12, 11, 21, 22, 23, 24 S)
REF 13010	edelweiss VENEER SET 14-24 M up (1 x 14, 13, 12, 11, 21, 22, 23, 24 M)
REF 13020	edelweiss VENEER SET 14-24 L up (1 x 14, 13, 12, 11, 21, 22, 23, 24 L)
REF 13030	edelweiss VENEER SET 44-34 S low (1 x 44, 43, 42, 41, 31, 32, 33, 34 S)
REF 13040	edelweiss VENEER SET 44-34 M low (1 x 44, 43, 42, 41, 31, 32, 33, 34 M)
REF 14121	edelweiss VENEER SET XS up (1 x 13, 12, 11, 21, 22, 23 XS)
REF 10100	edelweiss VENEER SET S up (1 x 13, 12, 11, 21, 22, 23 S)
REF 10110	edelweiss VENEER SET M up (1 x 13, 12, 11, 21, 22, 23 M)
REF 10120	edelweiss VENEER SET L up (1 x 13, 12, 11, 21, 22, 23 L)
REF 10130	edelweiss VENEER SET S low (1 x 43, 42, 41, 31, 32, 33 S)
REF 10140	edelweiss VENEER SET M low (1 x 43, 42, 41, 31, 32, 33 M)

edelweiss VENEER SINGLE REFILLS

REF 14122	edelweiss VENEER 11/21 XS	(1 x 11, 21 XS)
REF 10180	edelweiss VENEER 11/21 S	(1 x 11, 21 S)
REF 10181	edelweiss VENEER 11/21 M	(1 x 11, 21 M)
REF 10182	edelweiss VENEER 11/21 L	(1 x 11, 21 L)
REF 14123	edelweiss VENEER 12/22 XS	(1 x 12, 22 XS)
REF 10183	edelweiss VENEER 12/22 S	(1 x 12, 22 S)
REF 10184	edelweiss VENEER 12/22 M	(1 x 12, 22 M)
REF 10185	edelweiss VENEER 12/22 L	(1 x 12, 22 L)
REF 14124	edelweiss VENEER 11 XS	
REF 10150	edelweiss VENEER 11 S	
REF 10151	edelweiss VENEER 11 M	
REF 10152	edelweiss VENEER 11 L	
REF 14125	edelweiss VENEER 12 XS	
REF 10153	edelweiss VENEER 12 S	
REF 10154	edelweiss VENEER 12 M	
REF 10155	edelweiss VENEER 12 L	
REF 14126	edelweiss VENEER 13 XS	
REF 10156	edelweiss VENEER 13 S	
REF 10157	edelweiss VENEER 13 M	
REF 10158	edelweiss VENEER 13 L	
REF 13100	edelweiss VENEER 14 S	
REF 13101	edelweiss VENEER 14 M	
REF 13102	edelweiss VENEER 14 L	
REF 13103	edelweiss VENEER 15 S	
REF 13104	edelweiss VENEER 15 M	
REF 13105	edelweiss VENEER 15 L	
REF 14127	edelweiss VENEER 21 XS	
REF 10159	edelweiss VENEER 21 S	
REF 10160	edelweiss VENEER 21 M	

REF 10161	edelweiss VENEER 21 L
REF 14128	edelweiss VENEER 22 XS
REF 10162	edelweiss VENEER 22 S
REF 10163	edelweiss VENEER 22 M
REF 10164	edelweiss VENEER 22 L
REF 14129	edelweiss VENEER 23 XS
REF 10165	edelweiss VENEER 23 S
REF 10166	edelweiss VENEER 23 M
REF 10167	edelweiss VENEER 23 L
REF 13106	edelweiss VENEER 24 S
REF 13107	edelweiss VENEER 24 M
REF 13108	edelweiss VENEER 24 L
REF 13109	edelweiss VENEER 25 S
REF 13110	edelweiss VENEER 25 M
REF 13111	edelweiss VENEER 25 L
REF 10168	edelweiss VENEER 31 S
REF 10169	edelweiss VENEER 31 M
REF 10170	edelweiss VENEER 32 S
REF 10171	edelweiss VENEER 32 M
REF 10172	edelweiss VENEER 33 S
REF 10173	edelweiss VENEER 33 M
REF 13112	edelweiss VENEER 34 S
REF 13113	edelweiss VENEER 34 M
REF 13114	edelweiss VENEER 35 S
REF 13115	edelweiss VENEER 35 M
REF 10174	edelweiss VENEER 41 S
REF 10175	edelweiss VENEER 41 M
REF 10176	edelweiss VENEER 42 S
REF 10177	edelweiss VENEER 42 M
REF 10178	edelweiss VENEER 43 S
REF 10179	edelweiss VENEER 43 M
REF 13116	edelweiss VENEER 44 S
REF 13117	edelweiss VENEER 44 M
REF 13118	edelweiss VENEER 45 S
REF 13119	edelweiss VENEER 45 M

edelweiss OCCLUSIONVD SET REFILLS

REF 13170	OCCLUSIONVD SET 17-27 S up (1 x 17, 16, 15, 14, 24, 25, 26, 27 S)
REF 13175	OCCLUSIONVD SET 17-27 M up (1 x 17, 16, 15, 14, 24, 25, 26, 27 M)
REF 13180	OCCLUSIONVD SET 17-27 L up (1 x 17, 16, 15, 14, 24, 25, 26, 27 L)
REF 13185	OCCLUSIONVD SET 47-37 S low (1 x 47, 46, 45, 44, 34, 35, 36, 37 S)
REF 13190	OCCLUSIONVD SET 47-37 M low (1 x 47, 46, 45, 44, 34, 35, 36, 37 M)
REF 13195	OCCLUSIONVD SET 47-37 L low (1 x 47, 46, 45, 44, 34, 35, 36, 37 L)
REF 13150	OCCLUSIONVD SET 17-14 S up (1 x 17, 16, 15, 14 S)
REF 13151	OCCLUSIONVD SET 17-14 M up (1 x 17, 16, 15, 14 M)

DIRECT SYSTEM

REF 13152	OCCLUSIONVD SET 17-14 L up (1 x 17, 16, 15, 14 L)
REF 13153	OCCLUSIONVD SET 24-27 S up (1 x 24, 25, 26, 27 S)
REF 13154	OCCLUSIONVD SET 24-27 M up (1 x 24, 25, 26, 27 M)
REF 13155	OCCLUSIONVD SET 24-27 L up (1 x 24, 25, 26, 27 L)
REF 13156	OCCLUSIONVD SET 34-37 S low (1 x 34, 35, 36, 37 S)
REF 13157	OCCLUSIONVD SET 34-37 M low (1 x 34, 35, 36, 37 M)
REF 13158	OCCLUSIONVD SET 34-37 L low (1 x 34, 35, 36, 37 L)
REF 13159	OCCLUSIONVD SET 47-44 S low (1 x 47, 46, 45, 44 S)
REF 13160	OCCLUSIONVD SET 47-44 M low (1 x 47, 46, 45, 44 M)
REF 13161	OCCLUSIONVD SET 47-44 L low (1 x 47, 46, 45, 44 L)

edelweiss OCCLUSIONVD SINGLE REFILLS

REF 13200	OCCLUSIONVD	14 S
REF 13201	OCCLUSIONVD	14 M
REF 13202	OCCLUSIONVD	14 L
REF 13203	OCCLUSIONVD	15 S
REF 13204	OCCLUSIONVD	15 M
REF 13205	OCCLUSIONVD	15 L
REF 13206	OCCLUSIONVD	16 S
REF 13207	OCCLUSIONVD	16 M
REF 13208	OCCLUSIONVD	16 L
REF 13209	OCCLUSIONVD	17 S
REF 13210	OCCLUSIONVD	17 M
REF 13211	OCCLUSIONVD	17 L
REF 13212	OCCLUSIONVD	24 S
REF 13213	OCCLUSIONVD	24 M
REF 13214	OCCLUSIONVD	24 L
REF 13215	OCCLUSIONVD	25 S
REF 13216	OCCLUSIONVD	25 M
REF 13217	OCCLUSIONVD	25 L
REF 13218	OCCLUSIONVD	26 S
REF 13219	OCCLUSIONVD	26 M
REF 13220	OCCLUSIONVD	26 L
REF 13221	OCCLUSIONVD	27 S
REF 13222	OCCLUSIONVD	27 M
REF 13223	OCCLUSIONVD	27 L
REF 13224	OCCLUSIONVD	34 S
REF 13225	OCCLUSIONVD	34 M
REF 13226	OCCLUSIONVD	34 L
REF 13227	OCCLUSIONVD	35 S
REF 13228	OCCLUSIONVD	35 M
REF 13229	OCCLUSIONVD	35 L
REF 13230	OCCLUSIONVD	36 S
REF 13231	OCCLUSIONVD	36 M

REF 13232	OCCLUSIONVD	36 L
REF 13233	OCCLUSIONVD	37 S
REF 13234	OCCLUSIONVD	37 M
REF 13235	OCCLUSIONVD	37 L
REF 13236	OCCLUSIONVD	44 S
REF 13237	OCCLUSIONVD	44 M
REF 13238	OCCLUSIONVD	44 L
REF 13239	OCCLUSIONVD	45 S
REF 13240	OCCLUSIONVD	45 M
REF 13241	OCCLUSIONVD	45 L
REF 13242	OCCLUSIONVD	46 S
REF 13243	OCCLUSIONVD	46 M
REF 13244	OCCLUSIONVD	46 L
REF 13245	OCCLUSIONVD	47 S
REF 13246	OCCLUSIONVD	47 M
REF 13247	OCCLUSIONVD	47 L

NANO-HYBRID COMPOSITE DENTIN SHADES

REF 10201	Dentin A0	15 x 0.3 g Tip
REF 10211	Dentin A1	15 x 0.3 g Tip
REF 10221	Dentin A2	15 x 0.3 g Tip
REF 10231	Dentin A3	15 x 0.3 g Tip
REF 10241	Dentin A3.5	15 x 0.3 g Tip

NANO-HYBRID COMPOSITE ENAMEL SHADE

REF 10301	Enamel	10 x 0.3 g Tip
-----------	--------	----------------

EFFECT SHADES

REF 13760	Effect Blue	1.5 g Syringe
REF 13750	Opaque White	1.5 g Syringe
REF 14702	Effect Ice	1.5 g Syringe

NANO-HYBRID COMPOSITE FLOW

REF 13770	Enamel Flowable	1.5 g Syringe
-----------	-----------------	---------------

BONDING

REF 10521	VENEER Bond	5 ml Bottle
-----------	-------------	-------------

ACCESSORIES

REF 14600	Dentin & Enamel Shade Guide
REF 13508	VENEER Sizing Guide up & low
REF 13509	OCCLUSIONVD Sizing Guide up & low
REF 10621	FLOW Application Tips (10x)
REF 814027	Step by Step Booklet

PROMOTION TOOL

Available upon request!



beautiful innovation you can trust

edelweiss dentistry products gmbh • Austria
office@edelweiss-dentistry.com
www.edelweiss-dentistry.com



817007/ 2019-02



edelweiss dentistry ® and the edelweiss Logo ® are registered trademarks of edelweiss dentistry products gmbh • Austria

© 2018 edelweiss dentistry products gmbh • Austria. All material contained in this brochure are the property of edelweiss dentistry products gmbh • Austria. No part of this publication may be reproduced, distributed, or transmitted in any form or by any means, without the prior written permission of the edelweiss dentistry products gmbh • Austria. All Rights Reserved.